

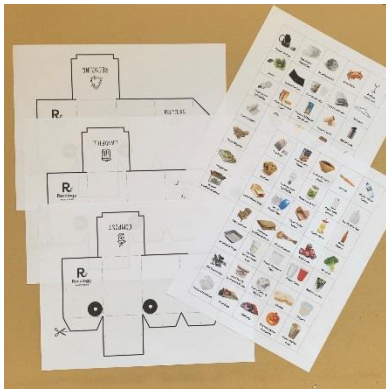


Create Your Own Bins!

Have you ever engaged in a friendly debate with family or friends over which materials belong in your curbside Recology bins? The Recology Sorting game offers a fun, creative way to learn what goes into your curbside containers — all from the comfort of your own home! Follow the instructions below to create your very own mini bins, and sort materials from the list provided.

Materials:

1. Blank Recycling, Landfill, and Compost bin templates, printed
2. Sorting tiles, printed
3. Scissors
4. Tape or glue
5. Markers, crayons, colored pencils, or anything you already have at home to decorate the paper bins. Get creative! Googly eyes, puff paint, and stickers are *not* off the table here! Try to use materials you already have so that you aren't creating extra waste.

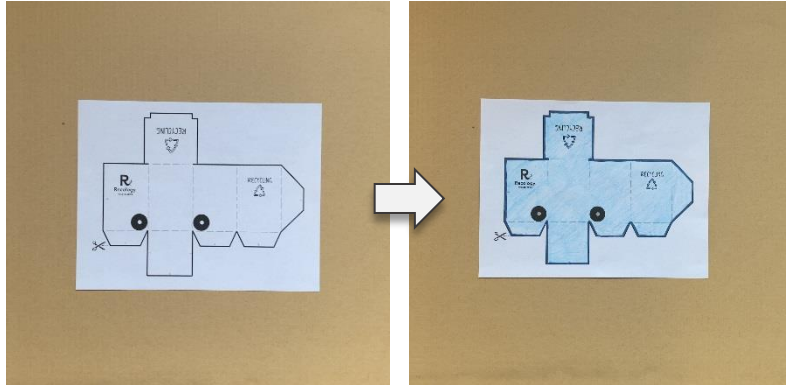


Instructions:

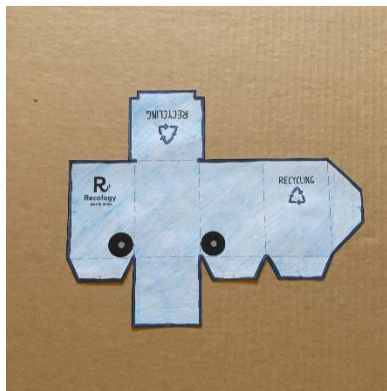
1. Start with the sorting tiles. Cut these out and set them aside.



2. Next, move to the recycling bin. Color/decorate the bin however you'd like—get creative! Just note that using blue colors and decorations may help remind you that this is your **BLUE** bin.



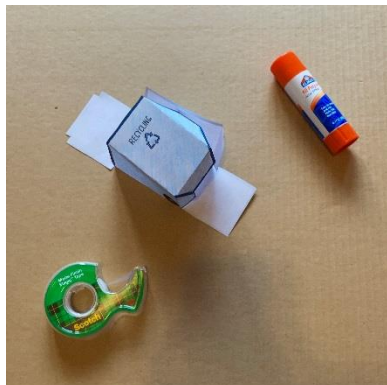
3. Cut out the bin along the **solid black lines**.



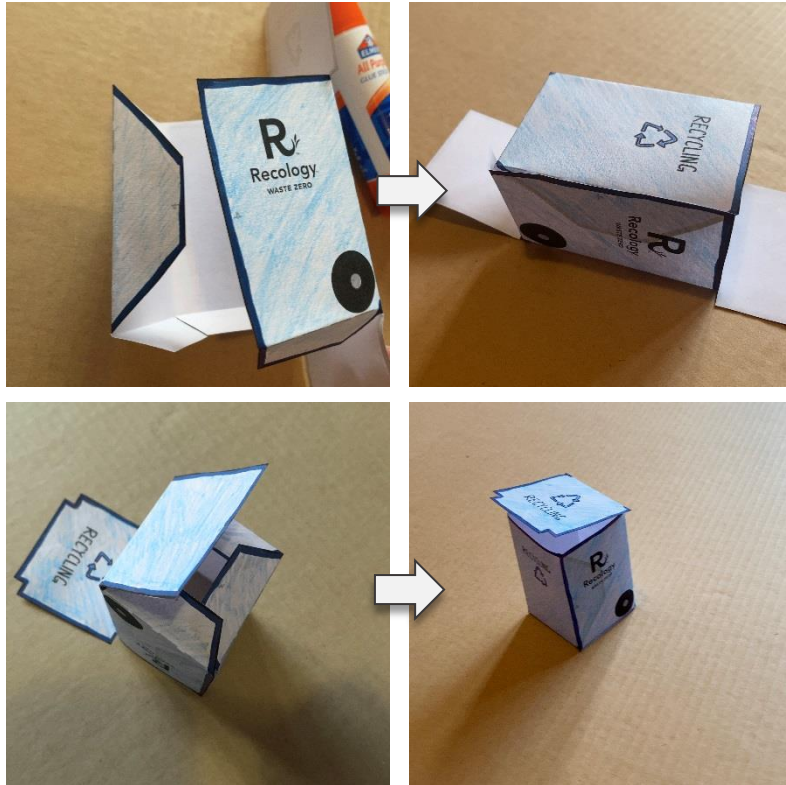
4. Fold along the dotted lines.



5. Glue or tape the flaps to match up by number.



The tapered flaps should go on the inside like so:



- Repeat steps 2-5 for the landfill and compost bins. Try to color your bins according to how they appear at your home!

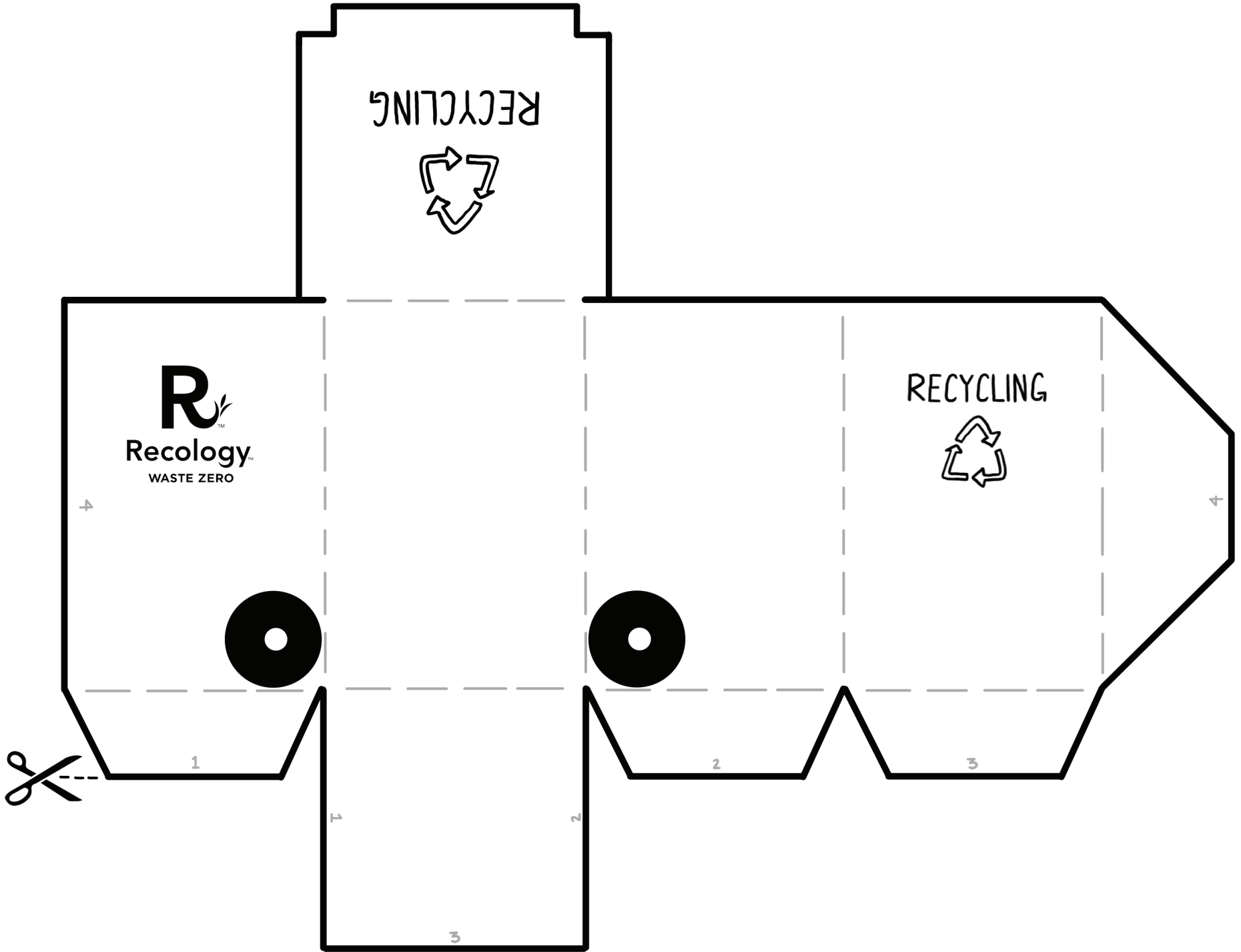


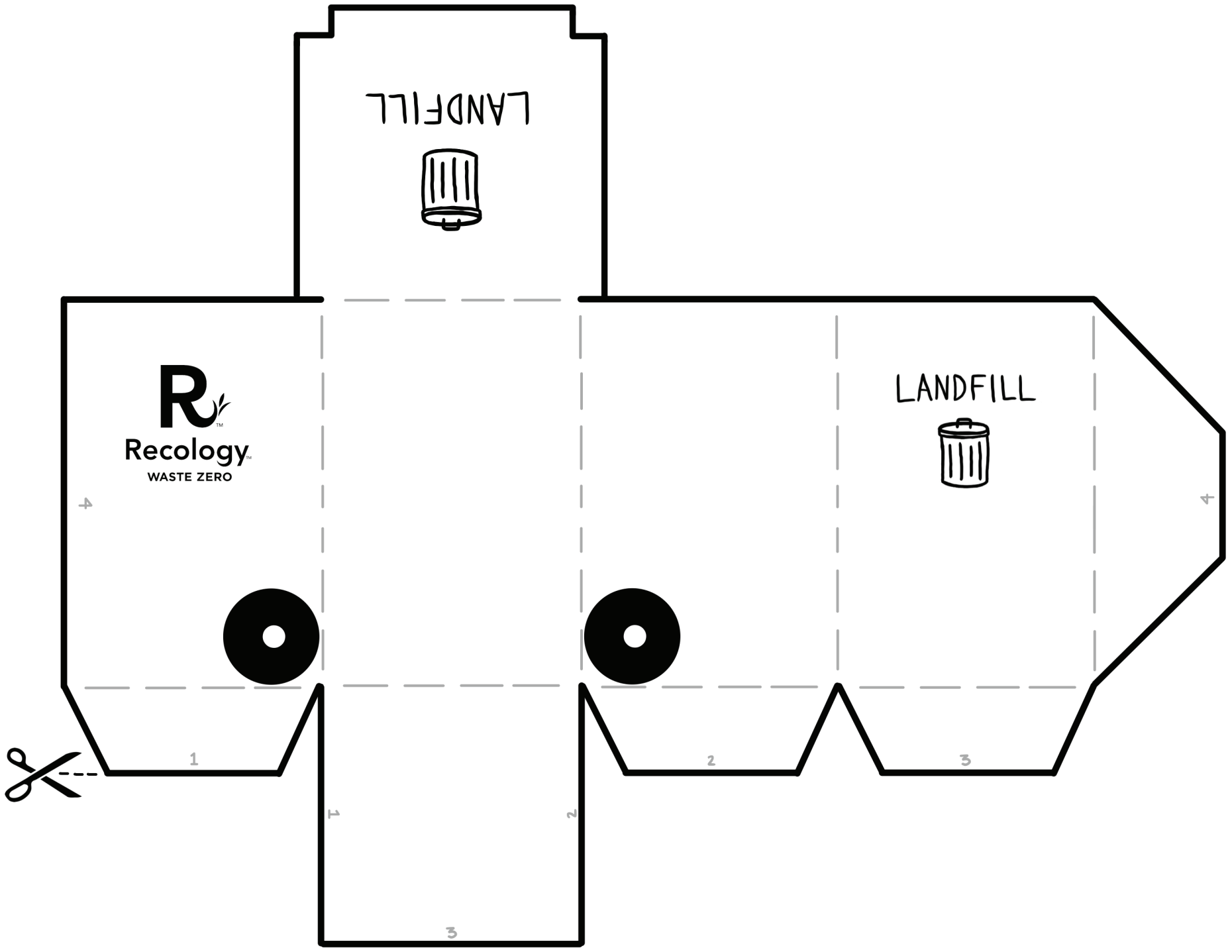
- Try to sort the tiles into the correct bin.



Sorting Tiles

 <p>Plants/Yard Waste</p>	 <p>Paperboard Boxes</p>	 <p>Coffee & Paper Filters</p>	 <p>Carrots</p>	 <p>Plastic Water Bottles</p>
 <p>Soda Cans</p>	 <p>Flattened Cardboard Boxes</p>	 <p>Glass Jars & Lids</p>	 <p>Broccoli</p>	 <p>Plastic Milk Jugs</p>
 <p>Plastic Cups</p>	 <p>Loose Plastic Bags</p>	 <p>Aluminum Trays</p>	 <p>Apple Cores</p>	 <p>Mylar Pouches</p>
 <p>Plastics Sandwich Bags</p>	 <p>Aluminum Foil</p>	 <p>Paper Plates & Napkins</p>	 <p>Clean Plastic Clamshells</p>	 <p>Diapers</p>
 <p>Broken Dishes</p>	 <p>Chip Bags</p>	 <p>Metal Cans/Tins</p>	 <p>Old Halloween Pumpkins</p>	 <p>Styrofoam</p>
 <p>Plastic Wrap</p>	 <p>Paper Napkins</p>	 <p>Magazines</p>	 <p>Paper Envelopes</p>	 <p>Hangers</p>
 <p>Paper Towels</p>	 <p>Paper Egg Cartons</p>	 <p>Banana Peels</p>	 <p>Pizza Boxes</p>	 <p>Chopsticks</p>





LANDFILL



RTM
Recology
WASTE ZERO

LANDFILL



4

4

1

2

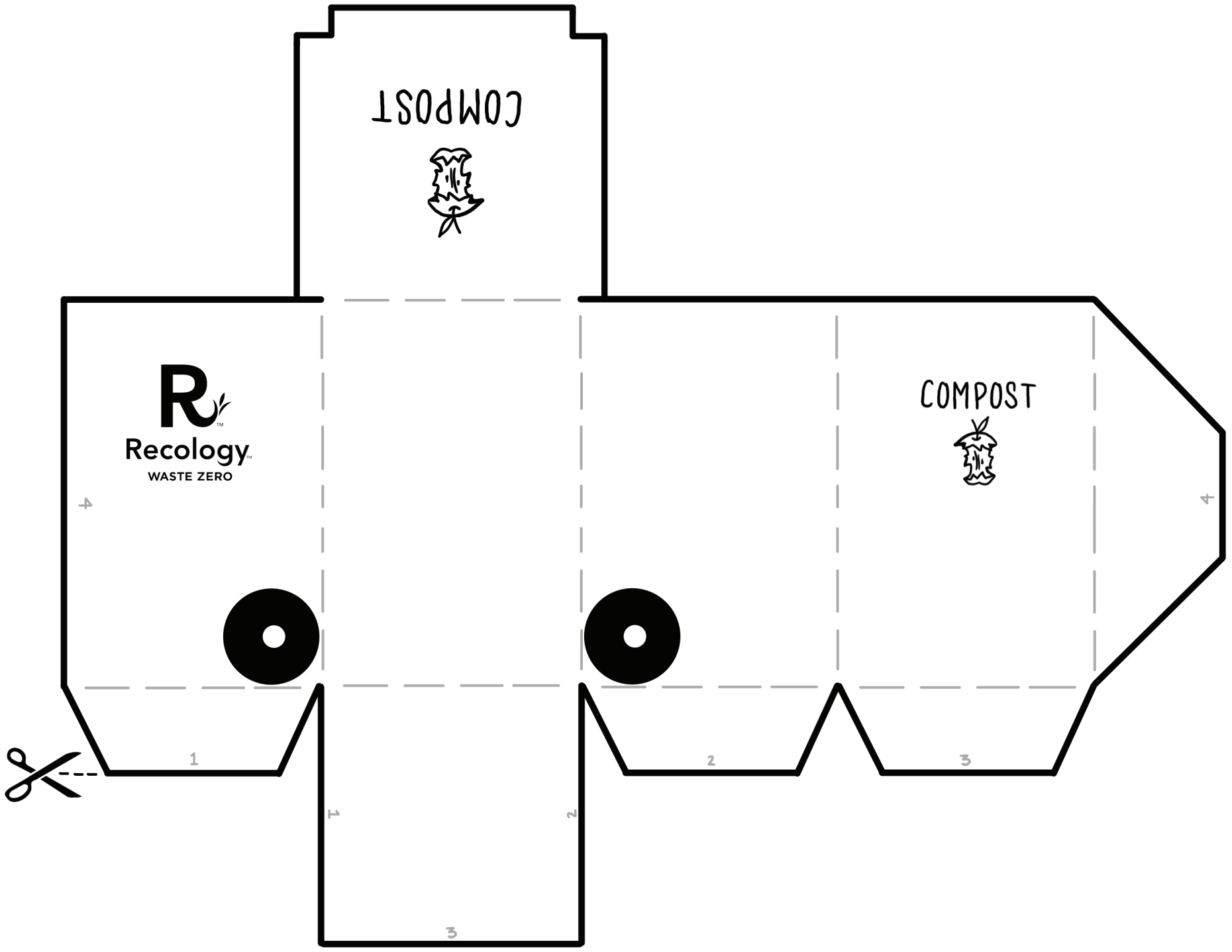
3

1

2

3





COMPOST



RTM
Recology
WASTE ZERO

COMPOST



4

4

1

2

3

1

2

3

